

Ion[®] WC33i

Sump Pump



1/3
HP

1/3 HP submersible sump pump with the versatility for pumping ground, surface, or effluent water with up to 1/2" solids.



Cast iron housing provides solid protection from wear and tear during routine or excessive use.

44
GPM*

Rated at 44 GPM of pumping capacity (*at 10' of head), providing dependable use for basement sump, septic tank effluent, or dewatering applications.



The Ion Switch controls pump without moving parts or contact points, eliminating the risk of mechanical failure commonly associated with conventional switches.

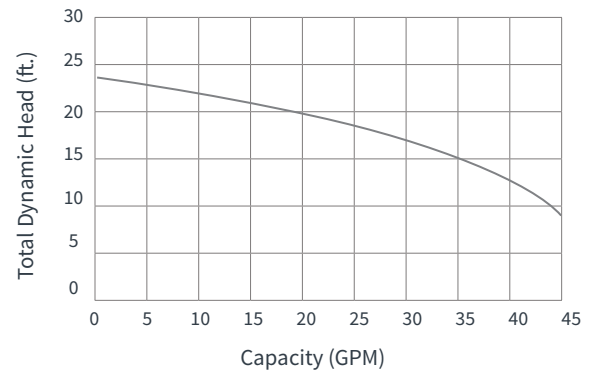


High efficiency motor with thermal overload protection as an additional safeguard in the event of overheating. Runs quietly and preserves energy.

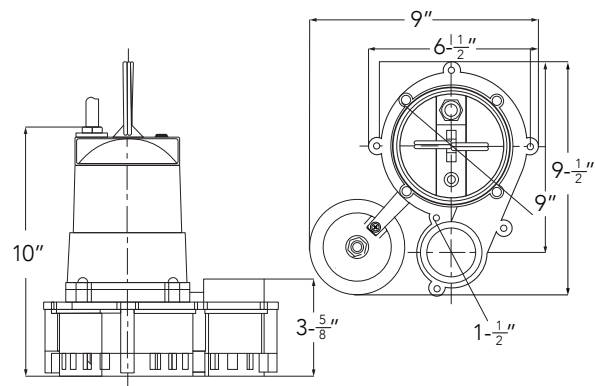
System Specifications

Typical Applications	<ul style="list-style-type: none"> • Basement sump • Dewatering • Septic tank effluent
Maximum Capacity	Up to 45 GPM
Maximum Head	Up to 24'
Electrical Data	115 V, 1 Ø, 4 FLA, 60 Hz
Motor Data	1/3 HP, 3450 RPM
Recommended Minimum Basin Size	18" x 24"
Automatic Operation	i: Ion Digital Level Control (standard) V: Vertical
Manual Operation	M: Manual
Materials of Construction	Cast iron & engineered thermoplastic
Power Cord	10' Standard
Discharge	1½" NPT
Solids	½"

Pump Performance



Pump Dimensions



Pump Features

- Carbon ceramic mechanical seal
- Oil-filled high efficiency PSC motor that uses half the AC power of most 1/3 HP pumps
- Ion® digital level control piggyback switch has no moving parts (standard)
- Size allows 2 pumps in 18" basin
- 3 year residential warranty