

Ion[®] BA75i

Sump Pump

Patent No. 8,591,198



3/4
HP

3/4 HP submersible sump pump with the strength and durability for pumping ground or surface water with up to 1/2" solids.



Stainless steel housing and intake screen with cast iron base offers corrosion resistance and thoroughly protects from debris and wear in harsh environments.

75
GPM*

Rated at 75 GPM of pumping capacity (*at 10' of head), well equipped to meet high volume demand in basement sump or dewatering applications.

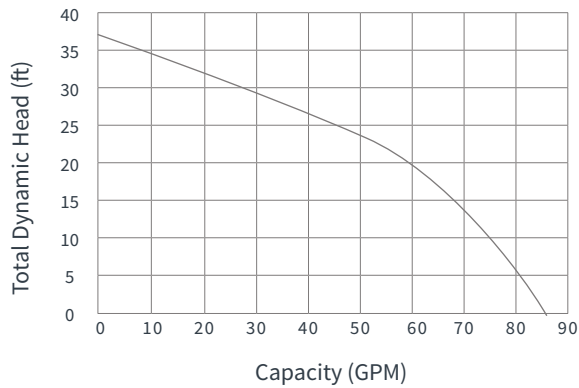


The Ion Switch controls pump without moving parts or contact points, eliminating the risk of mechanical failure commonly associated with conventional switches.

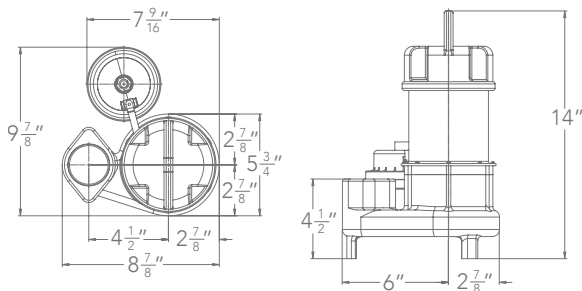


High efficiency motor with thermal overload protection as an additional safeguard in the event of overheating. Runs quietly and preserves energy.

Pump Performance



Pump Dimensions



Pump Features

- Energy efficient motor
- Carbon ceramic mechanical seal
- Thermal overload protection
- Ion® digital level control piggyback switch has no moving parts (standard)
- Stainless steel screen prevents debris from entering the pump
- 3 year residential warranty

System Specifications

Typical Applications	<ul style="list-style-type: none"> • Basement sump • Dewatering
Maximum Capacity	Up to 85 GPM
Maximum Head	Up to 37'
Electrical Data	115 V, 1 Ø, 7.5 FLA, 60 Hz
Motor Data	$\frac{3}{4}$ HP, 3450 RPM
Recommended Minimum Basin Size	18" x 24"
Automatic Operation	i: Ion Digital Level Control (standard) SPI: Vertical float
Manual Operation	M: Manual
Materials of Construction	Cast iron & stainless steel
Impeller	Cast iron vortex
Power Cord	20' Standard
Discharge Size	2" NPT
Solids Handling	$\frac{1}{2}$ "